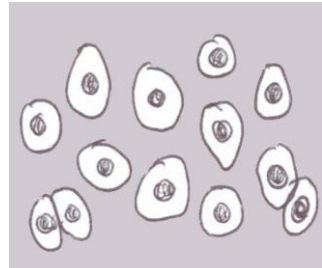
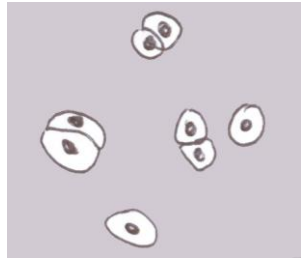


Page 4 – Cartilage

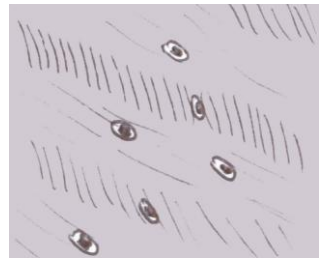
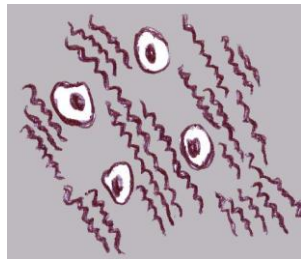
– Cells are located in lacunae (holes) in a matrix

Read the descriptions of the different types of cartilage below and select the best choice using all the clues you can find.



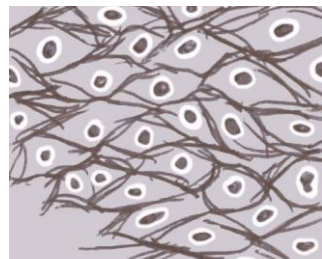
Hyaline Cartilage

Lacunae are located in a background matrix that looks fairly consistent throughout. There are **NO VISIBLE FIBERS**. The matrix looks like **GROUND GLASS**. (Occasionally “chatter marks” made by the knife that cut the tissue may vaguely resemble fibers)



Fibrocartilage

Lacuna are located in a matrix that has **VISIBLE FIBERS**. The fibers tend to be arranged as **parallel bundles**. The fibers **MAY** look kind of wispy or **MAY** be bold and very wavy. **NOTE:** Elastic connective tissue also has wavy fibers but elastic CT does not have lacunae!! Elastic CT has very flattened fibroblasts between fibers.



Elastic Cartilage

Lacunae are located in a matrix that has **VISIBLE FIBERS**. The fibers tend to be arranged as **individual strands that criss-cross each other**. The fibers stand out boldly. The fibers tend to stain much darker than the rest of the matrix.