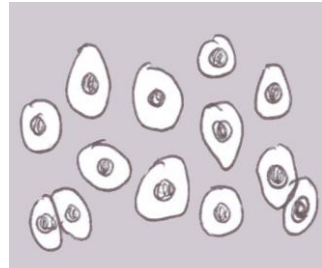
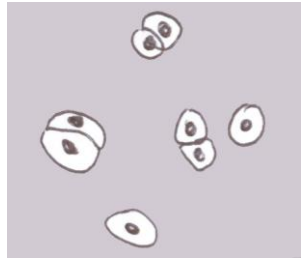


## Page 4 – Cartilage

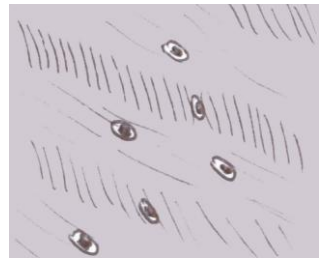
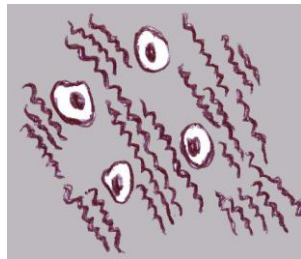
– Cells are located in lacunae (holes) in a matrix

Read the descriptions of the different types of cartilage below and select the best choice using all the clues you can find.



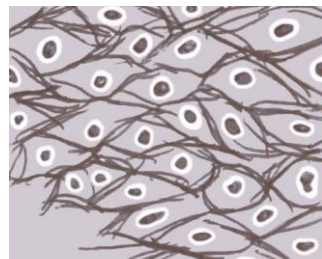
### hyaline cartilage

Lacunae are located in a matrix that looks fairly consistent throughout. There are NO visible fibers. The matrix looks like ground glass. (Occasionally “chatter marks” made by the knife that cut the tissue may vaguely resemble fibers)



### fibrocartilage

Lacunae are located in a matrix that has visible fibers. The fibers tend to be arranged as locally parallel bundles. (Though in adjacent areas the parallel bundles may be oriented in different directions.) Fibers may be hard to see or may be bold, and may be straight or may be wavy. NOTE: Do not confuse with elastic connective tissue which also has wavy fibers but does not have lacunae!!



### elastic cartilage

Lacunae are located in a matrix that has visible fibers. The fibers tend to be arranged in strands that criss-cross each other. The fibers tend to stain very darkly and may form random looking dark patterns between the lacunae.