

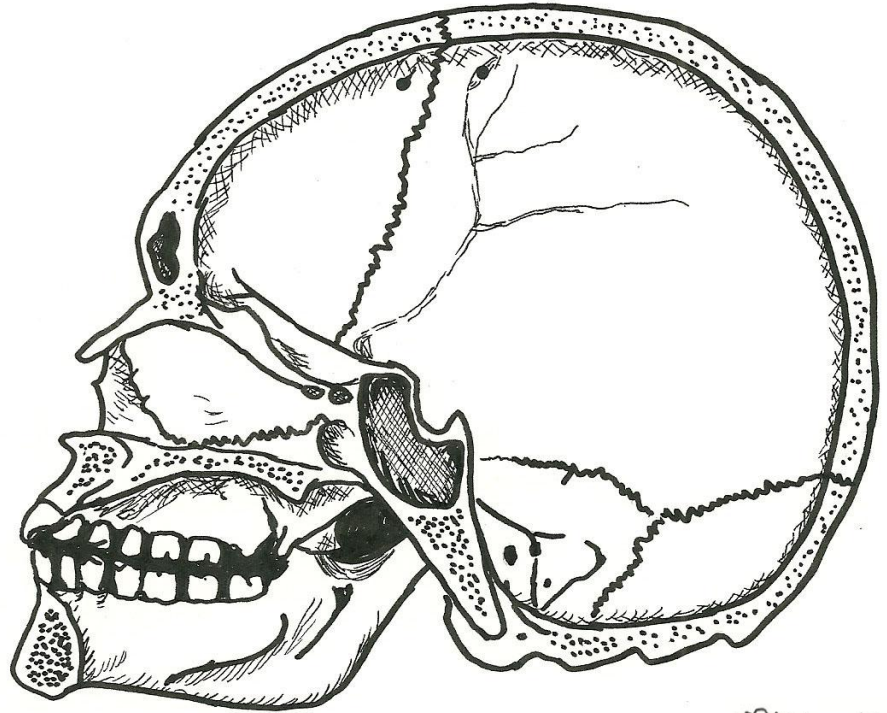
Adult Skull (sagittal view)

CRANIAL SKULL

- frontal bone
- parietal bone
- occipital bone
- temporal bone
- coronal suture
- lambdoid suture
- sella turcica
- frontal sinus
- sphenoidal sinus
- perpendicular plate

FACIAL SKULL

- nasal bone
- vomer
- maxilla
- palatine bone
- mandible



Neck Detail (lateral view)

FACIAL SKULL

- hyoid bone

